

HAIMER PSC TOOL HOLDERS



100%
**MADE IN
GERMANY**
MADE BY HAIMER

www.haimer.com

QUALITY STARTS WITH THE PRODUCT. SERVICE COMPLETES IT.

With our subsidiaries across the globe we guarantee the highest possible quality of support. We are always at your service: Our local specialists are available to personally support you in your respective business activities and based on your specific requirements.

From specific product advice to individual customer service support, the global HAIMER subsidiaries help you throughout the entire sales process even after the delivery is completed.

In countries without direct HAIMER sales and service subsidiaries, we trust our trained distribution and competence partners to locally support our end customers. Thus we are able to export our products to over 100 countries worldwide.

Haimer USA, LLC



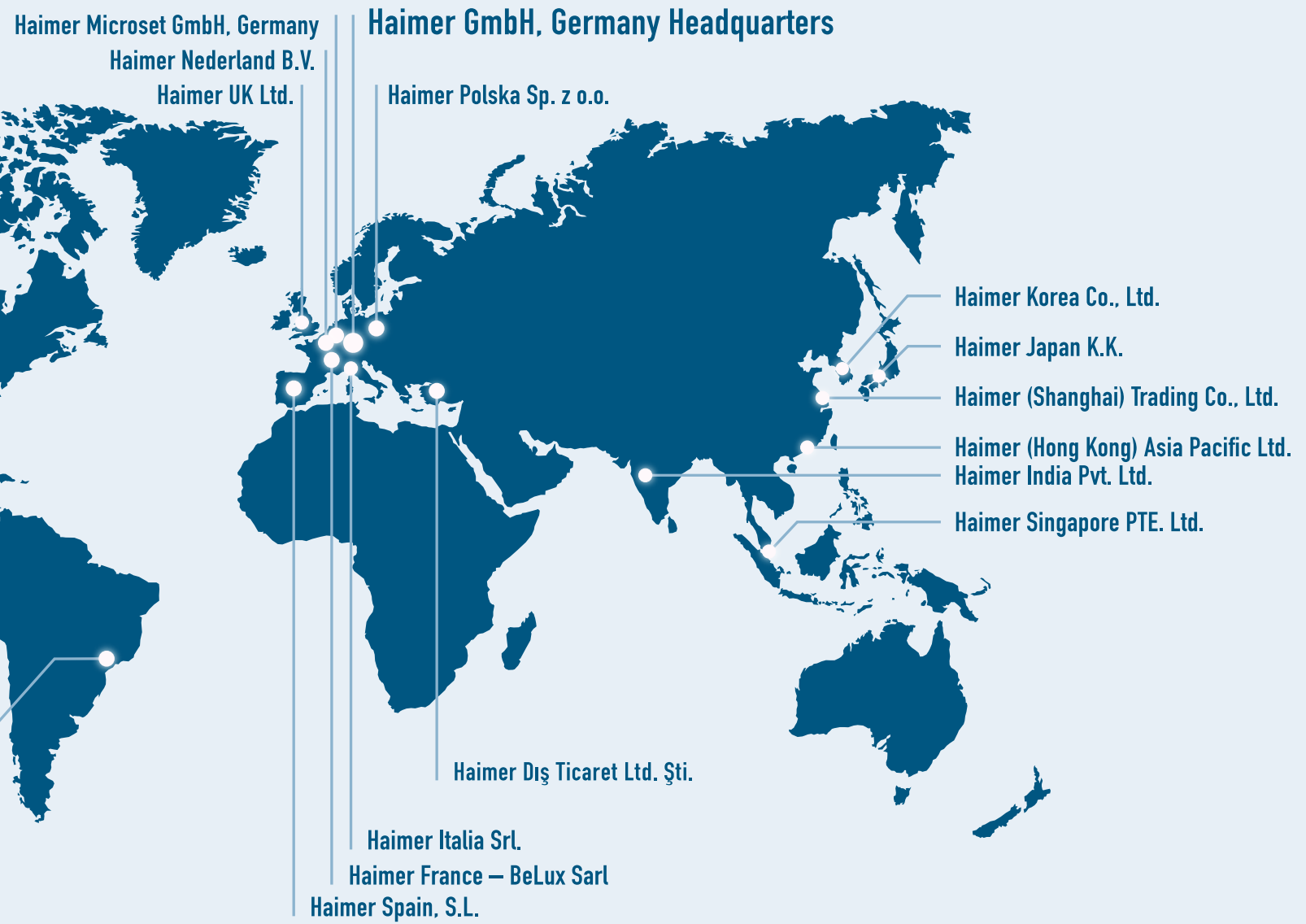
Haimer Mexico,
S. de R.L. de C.V.

Haimer do Brasil, Ltda.



17

This is the number of our subsidiaries worldwide. For first-class service, competent consultation and the global implementation of our corporate philosophy: **Quality wins.**



PSC 32

Duo-Lock Monoblock Holder	6
---------------------------	---

PSC 40

Shrink Fit Chuck	7
Power Mini Shrink Chuck	8
Collet Chuck ER	9
Duo-Lock Monoblock Holder	10

PSC 50

Shrink Fit Chuck	11
Power Mini Shrink Chuck	12
Collet Chuck ER	13
Duo-Lock Monoblock Holder	14

PSC 63

Power Collet Chuck	15
Shrink Fit Chuck	16
Power Shrink Chuck	18
Collet Chuck ER	20
Collet Chuck Mini-ER	21
High Precision Collet Chuck	22
Duo-Lock Monoblock Holder	23
Weldon Tool Holder	24
Face Mill Arbor	25

Accessories

Coolant Tubes	26
Locknut for Mini-ER	27

POLYGON SHANK COUPLING PSC

ISO 26623

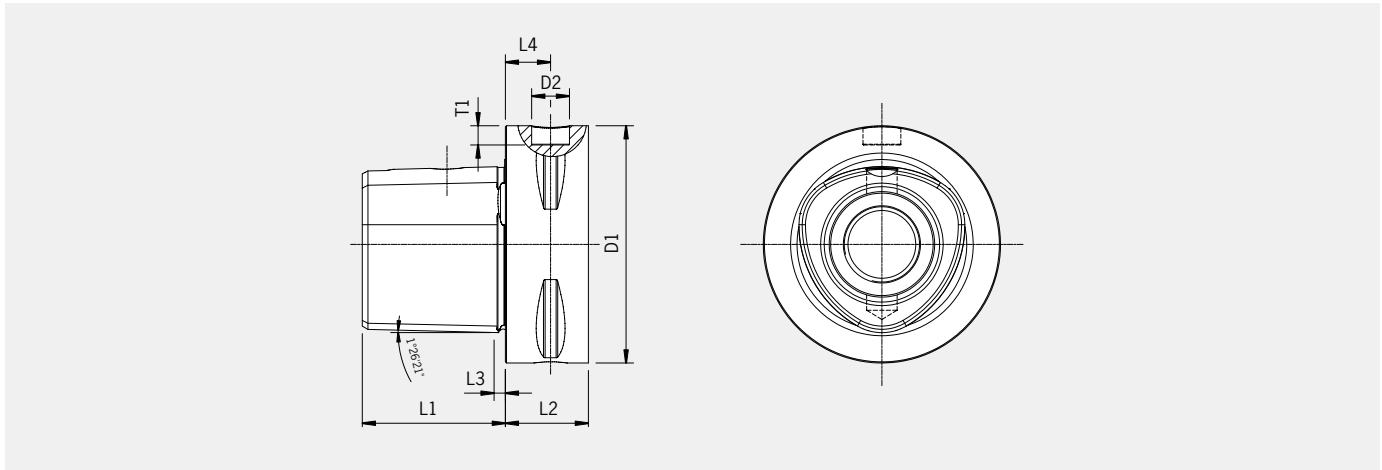
Compared to the steep taper, the PSC has the following advantages:

- Highly repeatable accuracy when clamping tools into spindle
- Fixed axial positioning with flat contact surface
- Suitable for high speed cutting
- No pull stud necessary
- Interface with a unique tapered polygon and flange face contact
- Exact positioning in the circumferential direction
- Highest runout accuracy, torque and rigidity
- Innovative modular tool system with highest precision
- Suitable for both turning and milling centres
- Incl. bore for data chip $\varnothing 10$ mm

Material:

- Special case-hardened steel for highly stressed parts
- Surface hardness: 58 +2 HRC
- **Tensile strength in core min. 950 N/mm²**

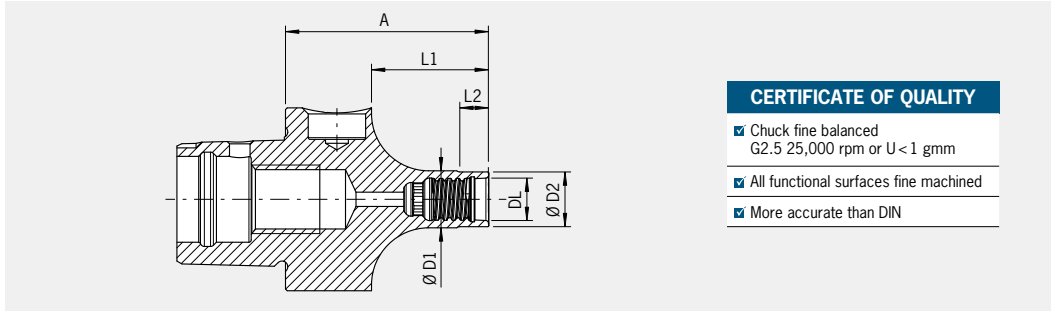
In general: According to latest standard for assembly of coolant tubes



Length [mm]	D1	D2	L1	L2	L3	L4	T1
PSC 32	32	10	19	15	2.5	9	5.4
PSC 40	40	10	24	20	2.5	12	5.2
PSC 50	50	10	30	20	3	12	5.1
PSC 63	63	10	38	22	3	12	5

DUO-LOCK MONOBLOCK HOLDER ISO 26623-1 · PSC 32

NEW!



CERTIFICATE OF QUALITY	
<input checked="" type="checkbox"/>	Chuck fine balanced G2.5 25,000 rpm or U < 1 gmm
<input checked="" type="checkbox"/>	All functional surfaces fine machined
<input checked="" type="checkbox"/>	More accurate than DIN

Use:

Duo-Lock Monoblock holder for direct clamping.
Perfectly suitable for milling with short overhang.

- All holders incl. inner cooling
- Hardened 54-2 HRC

Interface		DL10	DL12	DL16	DL20
	Ø D1 [mm]	10	12	16	20
	Ø D2 [mm]	9.6	11.5	15.5	19.3
	L1 [mm]	20.5	26.5	25.5	30.5
	L2 [mm]	5	6	8	10
Length A [mm]	short	35.5	41.5	40.5	45.5
Order No.	CC3.190...	.DL10	.DL12	.DL16	.DL20



Torque of Duo-Lock interface				
	DL10	DL12	DL16	DL20
Nm	20	30	60	80

Attention: For longlife cycle of the system, compliance with the torque is required!

Accessories

Coolant tube



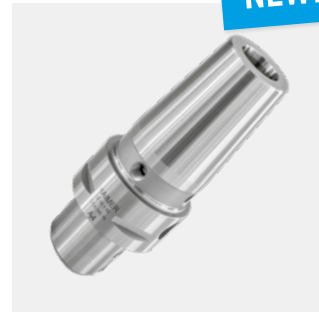
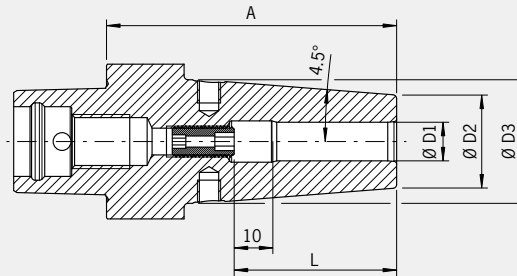
Order No. 85.700.CC3

SHRINK FIT CHUCK ISO 26623-1 · PSC 40

NEW!

CERTIFICATE OF QUALITY

- ☑ Chuck fine balanced
G2.5 25,000 rpm or U < 1 gmm
- ☑ All functional surfaces fine machined
- ☑ More accurate than DIN



Use:

Shrink Fit Chuck suitable to all kind of shrink fit units.
Available from Ø 1/8"–3/4" (3–20 mm).

- With threaded holes in order to balance with balancing screws
- For HSS and solid carbide tools with shank tolerance h6
- Heat resistant hot-working steel
- Hardened 54 -2 HRC
- Cool Jet bores that can be sealed included (metric optional)
- Cooling with Cool Flash for an extra charge

ISO 26623

- Included in delivery: With back-up screw without coolant tube

Clamping	Ø D1 [mm]	03	04	05	06	08	10	12	14	16	18	20
	Ø D2 [mm]	10	10	10	21	21	24	24	27	27	33	33
	Ø D3 [mm]	–	–	–	27	27	32	32	34	34	40	40
	L [mm]	–	–	–	36	36	42	47	47	50	50	52
Length A [mm]	short	75 ¹⁾	75 ¹⁾	75 ¹⁾	75	75	75	75	80	80	80	85
Order No.	CC4.140...	.03.1	.04.1	.05.1	.06	.08	.10	.12	.14	.16	.18	.20

Clamping	Ø D1 [inch]	1/8	3/16	1/4	5/16	3/8	1/2	5/8	3/4
	Ø D2 [inch]	0.39	0.39	0.83	0.83	0.94	0.94	1.06	1.30
	Ø D3 [inch]	–	–	1.06	1.06	1.26	1.26	1.34	1.57
	L [inch]	–	–	1.42	1.42	1.65	1.85	1.97	2.05
Length A [inch]	short	2.95 ¹⁾	2.95 ¹⁾	2.95 ¹⁾	2.95	2.95	2.95	3.15	3.35
Order No.	CC4.140...	.1/8z.1	.3/16z.1	.1/4z.4	.5/16z.4	.3/8z.4	.1/2z.4	.5/8z.4	.3/4z.4

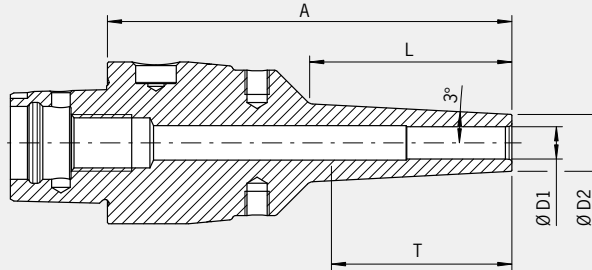
Accessories

Shrink fit extensions		See Master Catalog
Balance screws		See Master Catalog
Back-up screws		See Master Catalog
Cool Jet bores		Order No. 91.100.24
Cool Flash		Order No. 91.100.40
Cool Flash Upgrade incl. Cool Jet		Order No. 91.100.41
Coolant tube		Order No. 85.700.CC4

1) Without back-up screw, without thread for balancing screws, without slits along the clamping bore for cooling from outside, not suitable for HSS tools

POWER MINI SHRINK CHUCK ISO 26623-1 · PSC 40

NEW!



CERTIFICATE OF QUALITY

- ✓ Chuck fine balanced
G2.5 25,000 rpm or U < 1 gmm
- ✓ All functional surfaces fine machined
- ✓ More accurate than DIN

Power Mini Shrink Chuck is perfect for 5-axis-machining of parts that are difficult to access. Therefore, efficient milling is possible with an angled tool even at long protruding lengths.

- 3 mm wall thickness
- 3° angle at the top
- With threaded holes in order to balance with balancing screws
- For solid carbide tools with shank tolerance h6
- Heat resistant hot-working steel
- Hardened 54 -2 HRC

Attention: Heating and cooling sleeves are needed when shrinking on most shrink fit machines (see accessories). However, when using the Power Clamp i4.0 Sprint/Air or Nano machines with the motorized coil and scanner, sleeves are not necessary.

Clamping	Ø D1 [mm]	03	04	05	06	08	10	12
	Ø D2 [mm]	09	10	11	12	14	16	18
	T [mm]	-	-	-	-	-	68	78
	L [mm] ZG130	50	50	50	50	50	50	50
Length A [mm]	long	100	100	100	100	100	100	100
Order No.	CC4.181...	.03.8	.04.8	.05.8	.06.8	.08.8	.10.8	.12.8

Clamping	Ø D1 [inch]	1/8	3/16	1/4	3/8	1/2
	Ø D2 [inch]	0.35	0.43	0.47	0.63	0.71
	T [inch]	-	-	-	2.68	3.07
	L [inch] ZG130	1.97	1.97	1.97	1.97	1.97
Length A [inch]	long	3.94	3.94	3.94	3.94	3.94
Order No.	CC4.181...	.1/8z.8	.3/16z.8	.1/4z.8	.3/8z.8	.1/2z.8



Mini Shrink shrink and cooling sleeves

- Protect Mini Shrink chucks from overheating
- Extend lifetime of shrink fit chucks
- Secure and user friendly handling
- Cooling with standard cooling body

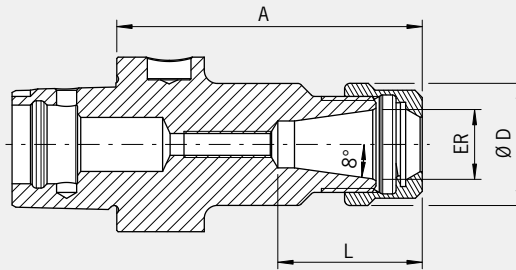
Fitting sleeves for Mini Shrink Chucks						Order No.
Size [mm]	Ø03	Ø06	Ø08	Ø10	Ø12	
Order No. 80.105.14.2...	.04	.09	.10	.11	.12	
Base						80.105.14.2.99
Set with base (12 pcs., Ø3–12 mm)						80.105.14.2.00

COLLET CHUCK ER ISO 26623-1 · PSC 40

NEW!

CERTIFICATE OF QUALITY

- ☑ Chuck fine balanced
G2.5 25,000 rpm or U < 1 gmm
- ☑ All functional surfaces fine machined
- ☑ More accurate than DIN



Use:

For clamping tools with cylindrical shank in collets according to ISO 15488 (previously DIN 6499). Available from ER16 to ER32.

ISO 26623

- Hardened 54 -2 HRC
- Included in delivery: With locknut
(balanced, with side coating for higher clamping forces)

ER			16	20	25	32
	Ø D [mm]		28	34	42	50
	Clamping range [mm]		0.5–10.0	1.5–13.0	1.0–16.0	1.5–20.0
	L [mm]		33	39	41.5	47.5
Length A [mm]	ultra short		-	55	55	55
Order No.	CC4.025...			.20	.25	.32
Length A [mm]	short		70	-	-	-
Order No.	CC4.020...		.16			

Accessories

Collets ER



Shrink Fit Collets



Locknut (pre-balanced)

Size

Order No. 83.912...



ER 16	ER 20	ER 25	ER 32
.16	.20	.25	.32

Fork wrench

Size

Order No. 84.200...



ER 16	ER 20
.16	.20

Clamping wrench

Size

Order No. 84.200...



ER 25	ER 32
.25	.32

Balancing index rings

Size

long/oversize

Order No. 79.350...



ER 16	ER 20	ER 25	ER 32
.28	.34	.42	.48

Adjusting screw

Size

Order No. 85.800...



ER 16	ER 20	ER 25	ER 32
.34	.34	.34	.35

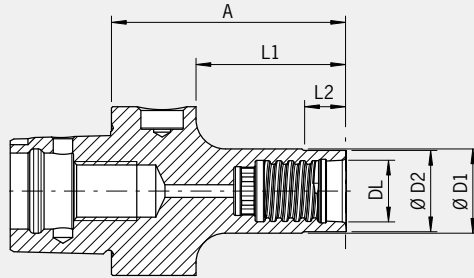
Coolant tube



Order No. 85.700.CC4

DUO-LOCK MONOBLOCK HOLDER ISO 26623-1 · PSC 40

NEW!



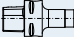
CERTIFICATE OF QUALITY

- ✓ Chuck fine balanced
G2.5 25,000 rpm or U < 1 gmm
- ✓ All functional surfaces fine machined
- ✓ More accurate than DIN

Use:

Duo-Lock Monoblock holder for direct clamping.
Perfectly suitable for milling with short overhang.

- All holders incl. inner cooling
- Hardened 54-2 HRC

Interface		DL10	DL12	DL16	DL20	DL25
Ø D1 [mm]		10	12	16	20	25
Ø D2 [mm]		9.6	11.5	15.5	19.3	24
L1 [mm]		28	28	33	33	38
L2 [mm]		5	6	8	10	12.5
Length A [mm]	short	45.5	46.5	50.5	55.5	66.75
Order No.	CC4.190... 	.DL10	.DL12	.DL16	.DL20	.DL25

Torque of Duo-Lock interface					
	DL10	DL12	DL16	DL20	DL25
Nm	20	30	60	80	100

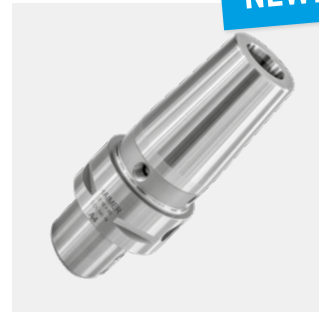
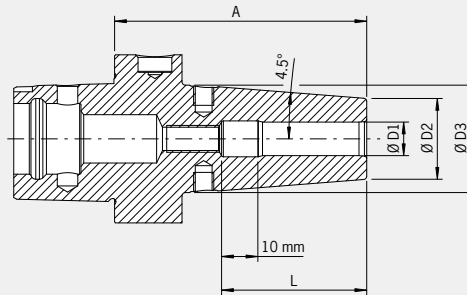
Attention: For longlife cycle of the system, compliance with the torque is required!

SHRINK FIT CHUCK ISO 26623-1 · PSC 50

NEW!

CERTIFICATE OF QUALITY

- ✓ Chuck fine balanced
G2.5 25,000 rpm or U < 1 gmm
- ✓ All functional surfaces fine machined
- ✓ More accurate than DIN



Use:

Shrink Fit Chuck suitable to all kind of shrink fit units.
Available from Ø 1/8"–3/4" (3–20 mm).

- With threaded holes in order to balance with balancing screws
- For HSS and solid carbide tools with shank tolerance h6
- Heat resistant hot-working steel
- Hardened 54 -2 HRC
- Cool Jet bores that can be sealed included (metric optional)
- Cooling with Cool Flash for an extra charge

ISO 26623

- Included in delivery: With back-up screw without coolant tube


Clamping	Ø D1 [mm]	03	04	05	06	08	10	12	14	16	18	20
	Ø D2 [mm]	10	10	10	21	21	24	24	27	27	33	33
	Ø D3 [mm]	-	-	-	27	27	32	32	34	34	40	40
	L [mm]	-	-	-	36	36	42	47	47	50	50	52
Length A [mm]	short	75 ¹⁾	75 ¹⁾	75 ¹⁾	75	75	75	75	80	80	80	85
Order No.	CC5.140...	.03.1	.04.1	.05.1	.06	.08	.10	.12	.14	.16	.18	.20



Clamping	Ø D1 [inch]	1/8	3/16	1/4	5/16	3/8	1/2	5/8	3/4
	Ø D2 [inch]	0.39	0.39	0.83	0.83	0.94	0.94	1.06	1.30
	Ø D3 [inch]	-	-	1.06	1.06	1.26	1.26	1.34	1.57
	L [inch]	-	-	1.42	1.42	1.65	1.85	1.97	2.05
Length A [inch]	short	2.95	2.95	2.95	2.95	2.95	2.95	3.15	3.35
Order No.	CC5.140...	.1/8z.1	.3/16z.1	.1/4z.4	.5/16z.4	.3/8z.4	.1/2z.4	.5/8z.4	.3/4z.4



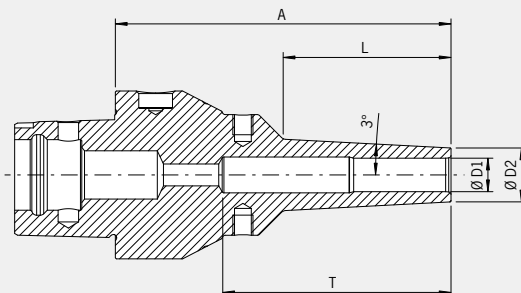
Accessories

Shrink fit extensions		See Master Catalog
Balance screws		See Master Catalog
Back-up screws		See Master Catalog
Cool Jet bores		Order No. 91.100.24
Cool Flash		Order No. 91.100.40
Cool Flash Upgrade incl. Cool Jet		Order No. 91.100.41
Coolant tube		Order No. 85.700.CC5

1) Without back-up screw, without thread for balancing screws, without slits along the clamping bore for cooling from outside, not suitable for HSS tools

POWER MINI SHRINK CHUCK ISO 26623-1 · PSC 50

NEW!



CERTIFICATE OF QUALITY

- ✓ Chuck fine balanced
G2.5 25,000 rpm or U < 1 gmm
- ✓ All functional surfaces fine machined
- ✓ More accurate than DIN

Power Mini Shrink Chuck is perfect for 5-axis-machining of parts that are difficult to access. Therefore, efficient milling is possible with an angled tool even at long protruding lengths.

- 3 mm wall thickness
- 3° angle at the top
- With threaded holes in order to balance with balancing screws
- For solid carbide tools with shank tolerance h6
- Heat resistant hot-working steel
- Hardened 54 -2 HRC

Attention: Heating and cooling sleeves are needed when shrinking on most shrink fit machines (see accessories). However, when using the Power Clamp i4.0 Sprint/Air or Nano machines with the motorized coil and scanner, sleeves are not necessary.

Clamping	Ø D1 [mm]	03	04	05	06	08	10	12	16
	Ø D2 [mm]	09	10	11	12	14	16	18	24
	T [mm]	-	-	-	-	-	68	78	75
	L [mm]	50	50	50	50	50	50	50	50
Length A [mm]	long	100	100	100	100	100	100	100	100
Order No.	CC5.181...	.03.8	.04.8	.05.8	.06.8	.08.8	.10.8	.12.8	.16.8

Clamping	Ø D1 [inch]	1/8	3/16	1/4	3/8	1/2	5/8
	Ø D2 [inch]	0.35	0.43	0.47	0.63	0.71	0.94
	T [inch]	-	-	-	2.68	3.07	2.95
	L [inch]	1.97	1.97	1.97	1.97	1.97	1.97
Length A [inch]	long	3.94	3.94	3.94	3.94	3.94	3.94
Order No.	CC5.181...	.1/8z.8	.3/16z.8	.1/4z.8	.3/8z.8	.1/2z.8	.5/8z.8



Mini Shrink shrink and cooling sleeves

- Protect Mini Shrink chucks from overheating
- Extend lifetime of shrink fit chucks
- Secure and user friendly handling
- Cooling with standard cooling body

Fitting sleeves for Mini Shrink Chucks

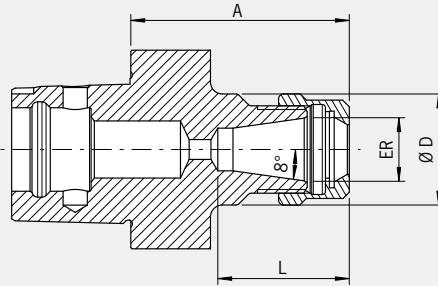
Size [mm]	Ø03	Ø06	Ø08	Ø10	Ø12	Order No.
Order No. 80.105.14.2...	.04	.09	.10	.11	.12	
Base						80.105.14.2.99
Set with base (12 pcs., Ø3–12 mm)						80.105.14.2.00

COLLET CHUCK ER ISO 26623-1 · PSC 50

NEW!

CERTIFICATE OF QUALITY

- ✓ Chuck fine balanced
G2.5 25,000 rpm or U < 1 gmm
- ✓ All functional surfaces fine machined
- ✓ More accurate than DIN



Use:

For clamping tools with cylindrical shank in collets according to ISO 15488 (previously DIN 6499). Available from ER16 to ER32.

ISO 26623

- Hardened 54 -2 HRC
- Included in delivery: With locknut (balanced, with side coating for higher clamping forces)

ER			16	20	25	32
	Ø D [mm]		28	34	42	50
	Clamping range [mm]		0.5–10.0	1.5–13.0	1.0–16.0	1.5–20.0
	L [mm]		33	39	41.5	47.5
Length A [mm]	short		55	55	55	60
Order No.	CC5.025...		.16	.20	.25	.32
Length A [mm]	long		100	-	-	-
Order No.	CC5.021...		.16	-	-	-

Accessories

Collets ER



Shrink Fit Collets



Locknut (pre-balanced)

Size

Order No. 83.912...



ER 16	ER 20	ER 25	ER 32
.16	.20	.25	.32

Fork wrench

Size

Order No. 84.200...



ER 16	ER 20
.16	.20

Clamping wrench

Size

Order No. 84.200...



ER 25	ER 32
.25	.32

Balancing index rings

Size

long/oversize

Order No. 79.350...



ER 16	ER 20	ER 25	ER 32
.28	.34	.42	.48

Adjusting screw

Size

Order No. 85.800...



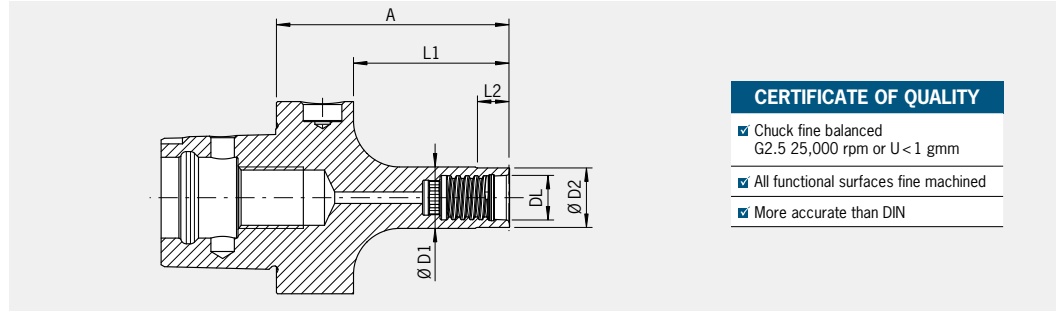
ER 16	ER 20	ER 25	ER 32
.34	.34	.34	.35

Coolant tube



Order No. 85.700.CC5

DUO-LOCK MONOBLOCK HOLDER ISO 26623-1 · PSC 50



CERTIFICATE OF QUALITY	
<input checked="" type="checkbox"/>	Chuck fine balanced G2.5 25,000 rpm or U < 1 gmm
<input checked="" type="checkbox"/>	All functional surfaces fine machined
<input checked="" type="checkbox"/>	More accurate than DIN

Use:

Duo-Lock Monoblock holder for direct clamping.
Perfectly suitable for milling with short overhang.

- All holders incl. inner cooling
- Hardened 54-2 HRC

Interface		DL16	DL20	DL25
	Ø D1 [mm]	16	20	25
	Ø D2 [mm]	15.5	19.3	24
	L1 [mm]	33	33	38
	L2 [mm]	8	10	12.5
Length A [mm]	short	60.5	60.5	71.75
Order No.	CC5.190...	.DL16	.DL20	.DL25

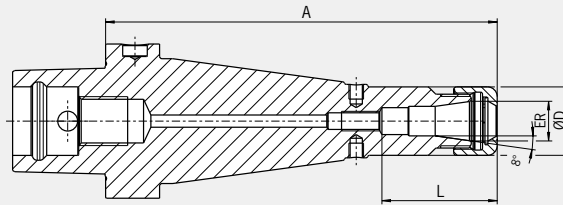
Torque of Duo-Lock interface			
	DL16	DL20	DL25
Nm	60	80	100

Attention: For longlife cycle of the system, compliance with the torque is required!

POWER COLLET CHUCK ISO 26623-1 · PSC 63

CERTIFICATE OF QUALITY

- ✓ Chuck fine balanced
G2.5 25,000 rpm or U < 1 gmm
- ✓ All functional surfaces fine machined
- ✓ More accurate than DIN



The Power Collet Chuck is the collet chuck for the highest machining capacity in high-speed manufacturing. The optimized design with better construction combines high rigidity with vibration dampening features, giving more protection to machines, spindles and tools. The universal Power Collet Chuck is a unique high performance chuck that can also be used with standard collets.

- High runout accuracy: 0.003 mm at 3 × D with HAIMER Power Collets
- Also for standard collets ER according to ISO 15488 (Attention: By using standard collet ER, length A will increase)
- High rigidity
- Smoother running thanks to vibration absorbing geometry, yielding better surface finish and increased tool, spindle and machine protection
- Increased machining capacity due to higher spindle speeds, higher feed rates and larger cutting depths
- Shorter cycle times, higher machining accuracy, high clamping force
- Equally suited to High Speed and Heavy Duty machining
- With threaded holes in order to balance with balancing screws

	ER	16	25	32
Ø D [mm]		28	42	50
Clamping range [mm]		2.0–10.0	2.0–16.0	2.0–20.0
L [mm]		43	51	53
Length A [mm]	oversize	130 ¹⁾	130 ¹⁾	130 ¹⁾
Order No.	CC6.024...	.16.3	.25.3	.32.3



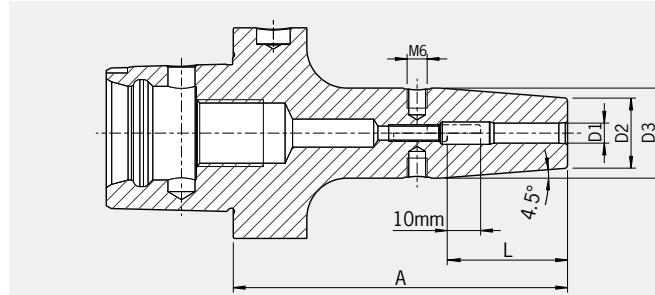
Accessories

Locknut (fine-balanced)

Size		ER 16	ER 25	ER 32
Order No. 83.914...		.16	.25	.32
Clamping wrench		ER 16	ER 25	ER 32
Order No. 84.650...		.16	.25	.32
Torque Master torque wrench				
Order No. 84.600.00				
Collets ER				
Shrink Fit Collets				
Power Collets				
Power Collets with Safe-Lock				
Cool Jet bores for Power Collets				Order No. 91.100.27
Coolant tube				Order No. 85.700.CC6

1) With back-up screw

SHRINK FIT CHUCK ISO 26623-1 · PSC 63



CERTIFICATE OF QUALITY

- ✓ Chuck fine balanced
G2.5 25,000 rpm or U < 1 gmm
- ✓ All functional surfaces fine machined
- ✓ More accurate than DIN

Use:

Shrink Fit Chuck suitable to all kind of shrink fit units.
Available from Ø 1/8"–1 1/4" (3–32 mm).

- With threaded holes in order to balance with balancing screws
- For HSS and solid carbide tools with shank tolerance h6
- Heat resistant hot-working steel
- Hardened 54-2 HRC
- Cooling with Cool Jet or Cool Flash for an extra charge

ISO 26623

- Included in delivery: With back-up screw without coolant tube

Clamping	Ø D1 [mm]	03	04	05	06	08	10	12	14	16	18	20	25	32
Ø D2 [mm]		10	10	10	21	21	24	24	27	27	33	33	44	44
Ø D3 [mm]		-	-	-	27	27	32	32	34	34	42	42	53	53
L [mm]		-	-	-	36	36	42	47	47	50	50	52	58	58
Length A [mm]	short	80 ¹⁾	80 ¹⁾	80 ¹⁾	80	80	80	80	85	85	85	85	90	95
Order No.	CC6.140...	.03	.04	.05	.06	.08	.10	.12	.14	.16	.18	.20	.25	.32
Length A [mm]	long	-	-	-	100	100	100	100	100	100	100	100	-	-
Order No.	CC6.141...				.06	.08	.10	.12	.14	.16	.18	.20		
Length A [mm]	ZG120	120 ²⁾	120 ²⁾	120 ²⁾	120	120	120	120	120	120	-	120	120	-
Order No.	CC6.147...	.03.1	.04.1	.05.1	.06	.08	.10	.12	.14	.16		.20	.25	
Length A [mm]	ZG130	130 ²⁾	130 ²⁾	130 ²⁾	130	130	130	130	130	130	130	130	130	130
Order No.	CC6.144...	.03.1	.04.1	.05.1	.06	.08	.10	.12	.14	.16	.18	.20	.25	.32
Length A [mm]	oversize	-	-	-	160	160	160	160	160	160	160	160	160	160
Order No.	CC6.142...				.06	.08	.10	.12	.14	.16	.18	.20	.25	.32

Accessories

Shrink fit extensions		See Master Catalog
Balance screws		See Master Catalog
Back-up screws		See Master Catalog
Cool Jet bores		Order No. 91.100.24
Cool Flash		Order No. 91.100.40
Cool Flash Upgrade incl. Cool Jet		Order No. 91.100.41
Coolant tube		Order No. 85.700.CC6

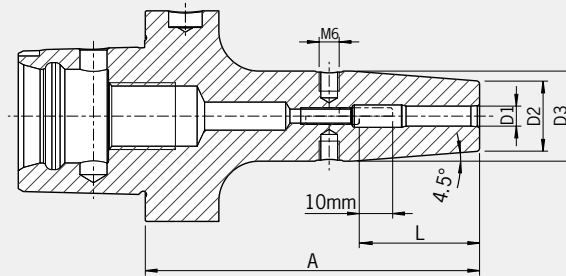
1) Without back-up screw, without thread for balancing screws, with slits along the clamping bore for cooling from outside

2) Without back-up screw, without thread for balancing screws, without slits along the clamping bore for cooling from outside, not suitable for HSS tools

SHRINK FIT CHUCK ISO 26623-1 · PSC 63

CERTIFICATE OF QUALITY

- ☑ Chuck fine balanced
G2.5 25,000 rpm or U < 1 gmm
- ☑ All functional surfaces fine machined
- ☑ More accurate than DIN




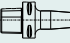

Use:

Shrink Fit Chuck suitable to all kind of shrink fit units.
Available from Ø 1/8"–1 1/4" (3–32 mm).




- With threaded holes in order to balance with balancing screws
- For HSS and solid carbide tools with shank tolerance h6
- Heat resistant hot-working steel
- Hardened 54 -2 HRC
- Cool Jet bores that can be sealed included
- Cooling with Cool Flash for an extra charge

ISO 26623

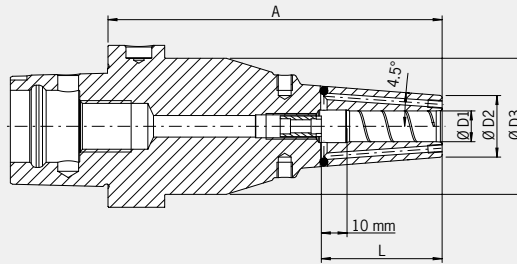
- Included in delivery: With back-up screw without coolant tube

Clamping	Ø D1 [inch]	1/4	5/16	3/8	7/16	1/2	5/8	3/4	7/8	1	1 1/4
	Ø D2 [inch]	0.83	0.83	0.94	0.94	0.94	1.06	1.30	1.30	1.73	1.73
	Ø D3 [inch]	1.06	1.06	1.26	1.26	1.26	1.34	1.65	1.65	2.09	2.09
	L [inch]	1.42	1.42	1.65	1.65	1.85	1.97	2.05	2.05	2.28	2.28
Length A [inch]	short		3.15	-	3.15	-	3.15	3.35	3.35	-	3.54
Order No.	CC6.140...		.1/4z.4		.3/8z.4		.1/2z.4	.5/8z.4	.3/4z.4		.1z.4
Length A [inch]	long		3.94	3.94	3.94	3.94	3.94	3.94	3.94	3.94	-
Order No.	CC6.141...		.1/4z.4	.5/16z.4	.3/8z.4	.7/16z.4	.1/2z.4	.5/8z.4	.3/4z.4	.7/8z.4	
Length A [inch]	ZG130		5.12	-	5.12	-	5.12	5.12	5.12	-	5.12
Order No.	CC6.144...		.1/4z.4		.3/8z.4		.1/2z.4	.5/8z.4	.3/4z.4		.11/4z.4

Accessories

Shrink fit extensions		See Master Catalog
Balance screws		See Master Catalog
Back-up screws		See Master Catalog
Cool Flash Upgrade incl. Cool Jet		Order No. 91.100.41
Coolant tube		Order No. 85.700.CC6

POWER SHRINK CHUCK ISO 26623-1 · PSC 63



CERTIFICATE OF QUALITY

- ✓ Chuck fine balanced
G2.5 25,000 rpm or U < 1 gmm
- ✓ All functional surfaces fine machined
- ✓ More accurate than DIN

The Power Shrink Chuck is the shrink fit chuck for highest cutting performance in high-speed manufacturing. The optimized design combines high rigidity with dampening vibrations, therefore giving more protection to machines, spindles and tools.

- Increased machining capacity due to higher spindle speed, higher feed and larger cutting depth
- Shorter cycle times, higher machining accuracy
- Smoother operation, yielding better surface finish and increased tool, spindle and machine protection
- With threaded holes in order to balance with balancing screws
- With back-up screw
- Hardened 54 -2 HRC
- Cool Jet bores that can be sealed included
- Cooling with Cool Flash for an extra charge

The long versions (A=130 mm) with slim tips are especially versatile to use.

- High rigidity, slim at the tip, dampen vibrations
- High clamping force
- Equally suited to high speed and heavy duty machining
- Universal usage, saves space in tool magazine

Clamping	Ø D1 [mm]	06	08	10	12	14	16	18	20	25	32
	Ø D2 [mm] ultra short	22	22	26.5	26.5	29.5	29.5	35.5	35.5	45	45
	Ø D3 [mm] ultra short	-	-	-	-	-	-	-	-	-	-
	L [mm] ultra short	36	36	42	47	47	50	50	52	58	60
Length A [mm]	ultra short	65	65	65 ¹⁾	65	70	70	70	70	80	80
Order No.	CC6.145...	.06.3	.08.3	.10.3	.12.3	.14.3	.16.3	.18.3	.20.3	.25.3	.32.3
	Ø D2 [mm] ZG130	21	21	24	24	-	27	-	33		
	Ø D2 [mm] ZG130	53	53	53	53	-	53	-	53		
	L [mm] ZG130	36	36	42	47	-	50	-	52		
Length A [mm]	ZG130	130	130	130	130	-	130	-	130		
Order No.	CC6.144...	.06.3	.08.3	.10.3	.12.3	-	.16.3	-	.20.3		

Power Shrink Chuck with Safe-Lock

Clamping	Ø D1 [mm]	10	12	16	20
	Ø D2 [mm] ultra short	26.5	26.5	29.5	35.5
	Ø D3 [mm] ultra short	-	-	-	-
	L [mm] ultra short	42	47	50	52
Length A [mm]	ultra short	65 ¹⁾	65	70	70
Order No.	CC6.145...	.10.37	.12.37	.16.37	.20.37
	Ø D2 [mm] ZG130	24	24	27	33
	Ø D2 [mm] ZG130	53	53	53	53
	L [mm] ZG130	42	47	50	52
Length A [mm]	ZG130	130	130	130	130
Order No.	CC6.144...	.10.37	.12.37	.16.37	.20.37

Cool Flash

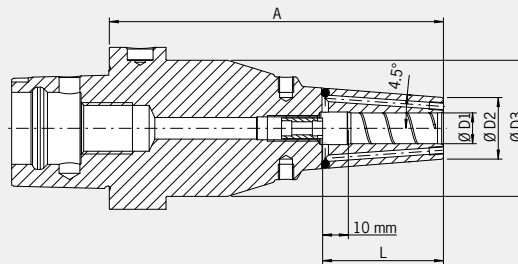


Order No. 91.100.40

POWER SHRINK CHUCK ISO 26623-1 · PSC 63

CERTIFICATE OF QUALITY

- ✓ Chuck fine balanced
G2.5 25,000 rpm or U < 1 gmm
- ✓ All functional surfaces fine machined
- ✓ More accurate than DIN



The Power Shrink Chuck is the shrink fit chuck for highest cutting performance in high-speed manufacturing. The optimized design combines high rigidity with dampening vibrations, therefore giving more protection to machines, spindles and tools.

- Increased machining capacity due to higher spindle speed, higher feed and larger cutting depth
- Shorter cycle times, higher machining accuracy
- Smoother operation, yielding better surface finish and increased tool, spindle and machine protection
- With threaded holes in order to balance with balancing screws
- With back-up screw
- Hardened 54 -2 HRC
- Cool Jet bores that can be sealed included
- Cooling with Cool Flash for an extra charge

The long versions (A = 5.12") with slim tips are especially versatile to use.

- High rigidity, slim at the tip, dampen vibrations
- High clamping force
- Equally suited to high speed and heavy duty machining
- Universal usage, saves space in tool magazine

Clamping	Ø D1 [inch]	1/4	5/16	3/8	7/16	1/2	5/8	3/4	7/8	1	1 1/4
	Ø D2 [inch] ultra short	0.87	0.87	1.04	1.04	1.04	1.16	1.40	1.40	1.77	1.77
	Ø D3 [inch] ultra short	-	-	-	-	-	-	-	-	-	-
	L [inch] ultra short	1.50	1.50	1.69	1.81	1.81	2.00	2.09	2.09	2.36	2.56
Length A [inch]	ultra short	2.56	2.56	2.56	2.56	2.56	2.76	2.76	2.76	3.15	3.15
Order No.	CC6.145...	.1/4z.3	.5/16z.3	.3/8z.3	.7/16z.3	.1/2z.3	.5/8z.3	.3/4z.3	.7/8z.3	.1z.3	.11/4z.3
	Ø D2 [inch] ZG130	0.83	-	0.94	-	0.94	-	-	-	-	-
	Ø D3 [inch] ZG130	2.09	-	2.09	-	2.09	-	-	-	-	-
	L [inch] ZG130	1.42	-	1.65	-	1.65	-	-	-	-	-
Length A [inch]	ZG130	5.12	-	5.12	-	5.12	-	-	-	-	-
Order No.	CC6.144...	.1/4z.3	-	.3/8z.3	-	.1/2z.3	-	-	-	-	-

Power Shrink Chuck with Safe-Lock

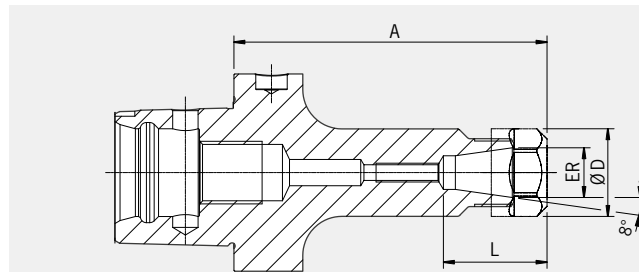
Clamping	Ø D1 [inch]	1/4	3/8	1/2	5/8	3/4
	Ø D2 [inch] ultra short	-	-	1.04	1.16	1.40
	Ø D3 [inch] ultra short	-	-	-	-	-
	L [inch] ultra short	-	-	1.81	2.00	2.09
Length A [inch]	ultra short	-	-	5.12	5.12	5.12
Order No.	CC6.145...	-	-	.1/2z.37	.5/8z.37	.3/4z.37
	Ø D2 [inch] ZG130	0.83	0.94	0.94	1.06	1.30
	Ø D3 [inch] ZG130	2.09	2.09	2.09	2.09	2.09
	L [inch] ZG130	1.42	1.65	1.65	1.97	1.97
Length A [inch]	ZG130	5.12	5.12	5.12	5.12	5.12
Order No.	CC6.144...	.1/4z.37	.3/8z.37	.1/2z.37	.5/8z.37	.3/4z.37

Cool Flash



Order No. 91.100.40

COLLET CHUCK ER ISO 26623-1 · PSC 63



CERTIFICATE OF QUALITY	
<input checked="" type="checkbox"/>	Chuck fine balanced G2.5 25,000 rpm or U < 1 gmm
<input checked="" type="checkbox"/>	All functional surfaces fine machined
<input checked="" type="checkbox"/>	More accurate than DIN

Use:

For clamping tools with cylindrical shank in collets according to ISO 15488 (previously DIN 6499). Available from ER 16 to 40.

ISO 26623

- Included in delivery: With locknut (balanced, with slide coating for higher clamping forces)

ER			16	20	25	32	40
	Ø D [mm]		28	34	42	50	63
	Clamping range [mm]		0.5–10.0	1.5–13.0	1.0–16.0	1.5–20.0	2.5–26.0
	L [mm] ultra short		²⁾	²⁾	48.5	47.5	53.5
	L [mm]		33	39	41.5	47.5	53.5
Length A [mm]	ultra short		60	60	60	60	60
Order No.	CC6.025...		.16 ¹⁾	.20 ¹⁾	.25 ¹⁾	.32 ¹⁾	.40 ¹⁾
Length A [mm]	long		100	100	100	100	100
Order No.	CC6.021...		.16	.20	.25	.32	.40
Length A [mm]	ZG130		130	130	130	130	130
Order No.	CC6.024...		.16	.20	.25	.32	.40
Length A [mm]	oversize		160	160	160	160	160
Order No.	CC6.022...		.16	.20	.25	.32	.40

Accessories

Collets ER



Shrink Fit Collets



Locknut (pre-balanced)

Size		ER 16	ER 20	ER 25	ER 32	ER 40
Order No. 83.912...		.16	.20	.25	.32	.40

Chuck nut HS (fine-balanced)

Size		ER 16	ER 20	ER 25	ER 32	ER 40
Order No. 83.912...		.16.HS	.20.HS	.25.HS	.32.HS	.40.HS

Fork wrench

Size		ER 16	ER 20			
Order No. 84.200...		.16	.20			

Clamping wrench

Size				ER 25	ER 32	ER 40
Order No. 84.200...				.25	.32	.40

Balancing index rings

Size	long/oversize		ER 16	ER 20	ER 25	ER 32	ER 40
Order No. 79.350...			.28	.34	.42	.48	.50

Adjusting screw

Size		ER 16	ER 20	ER 25	ER 32	ER 40
Order No. 85.800...		.34	.34	.34	.35	.35

Coolant tube

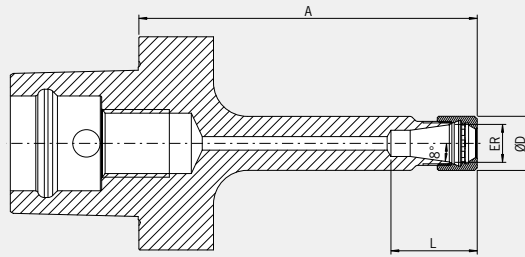


Order No. 85.700.CC6

COLLET CHUCK MINI-ER ISO 26623-1 · PSC 63

CERTIFICATE OF QUALITY

- ✓ Chuck fine balanced
G2.5 25,000 rpm or U < 1 gmm
- ✓ All functional surfaces fine machined
- ✓ More accurate than DIN



Use:

For clamping tools with cylindrical shank in collets according to ISO 15488 (previously DIN 6499).
Due to the slim contour and smaller clamping nut the collet chuck type Mini-ER is perfectly suitable for the requirements of micro machining (die & mold, medical engineering, micro mechanical engineering).

ISO 26623

- Included in delivery: With locknut (balanced, with slide coating for higher clamping forces)

Collet Chuck Mini-ER		11	16
	Ø D [mm]	16	22
	L [mm]	25.5	39.5
Length A [mm]	long	100	100
Order No.	CC6.021...	.11.7¹⁾	.16.7¹⁾
Length A [mm]	oversize	160	160
Order No.	CC6.022...	.11.7¹⁾	.16.7¹⁾

Accessories

Collets ER



Shrink Fit Collets



Locknut

Size

Order No. 915010-



Mini ER 16

0002

Torque wrench

Order No. 84.600.00

Insert torque wrench

Order No. 84.200...

Mini ER 16

.16.1

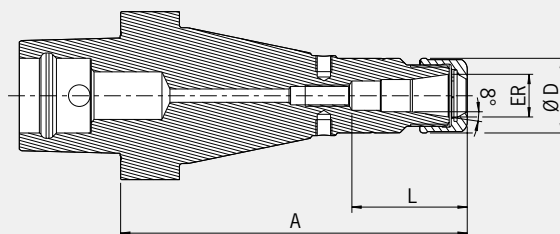
Coolant tube



Order No. 85.700.CC6

1) Without thread for back-up screw

HIGH PRECISION COLLET CHUCK ISO 26623-1 · PSC 63



CERTIFICATE OF QUALITY

- ✓ Chuck fine balanced
G2.5 30,000 rpm or U < 1 gmm
- ✓ All functional surfaces fine machined
- ✓ More accurate than DIN

The High Precision Collet Chuck is designed for the highest cutting performance in High Speed machining. The optimized design with better construction and a special coated smooth locknut combines high rigidity with vibration dampening and noise-reducing features, giving more protection to machines, spindles and tools.

- With a specially coated smooth locknut, balanced at < 1 gmm
- High runout accuracy: 0.003 mm at 3×D with HAIMER Power Collets
- Also for standard collets ER according to ISO 15488 (Attention: By using standard collet ER, length A will increase)
- High rigidity
- Smoother running thanks to vibration absorbing geometry, yielding better surface finish and increased tool, spindle and machine protection
- Increased machining capacity due to higher spindle speeds, higher feed rates and larger cutting depths
- Shorter cycle times, higher machining accuracy, high clamping force
- Equally suited to High Speed and Heavy Duty machining
- With threaded holes in order to balance with balancing screws
- Optional: Cool Jet bores on Power Collets

	ER	16	25	32
Ø D [mm]		28	42	50
Clamping range [mm]		2.0–10.0	2.0–16.0	2.0–20.0
L [mm]		43	51	53
Length A [mm]	oversize	130 ¹⁾	130 ¹⁾	130 ¹⁾
Order No.	CC6.024...	.16.3.HP	.25.3.HP	.32.3.HP

Accessories

High Precision Smooth Locknut (fine-balanced)

Size	ER 16	ER 25	ER 32
Order No. 83.914...	.16.1	.25.1	.32.1

Roller bearing wrench

Order No. 84.650...	.16.1	.25.1	.32.1
---------------------	-------	-------	-------

Collets ER

Shrink Fit Collets

Power Collets

Power Collets with Safe-Lock

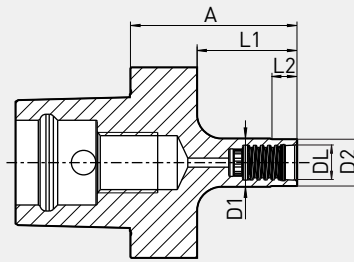
Cool Jet bores for Power Collets

Order No. Order No. 91.100.27

DUO-LOCK MONOBLOCK HOLDER ISO 26623-1 · PSC 63

CERTIFICATE OF QUALITY

- ☑ Chuck fine balanced
G2.5 25,000 rpm or U < 1 gmm
- ☑ All functional surfaces fine machined
- ☑ More accurate than DIN



Use:

Duo-Lock Monoblock holder for direct clamping.
Perfectly suitable for milling with short overhang.

- All holders incl. inner coolant
- Hardened 54 -2 HRC

Interface			DL10	DL12	DL16	DL20	DL25	DL32
	Ø D1 [mm]		10	12	16	20	25	32
	Ø D2 [mm]		9.6	11.5	15.5	19.3	24	31
	L1 [mm]		28	28	33	33	38	46
	L2 [mm]		5	6	8	10	12.5	16
Length A [mm]	short		50	50	55	55	60	68
Order No.	CC6.190...		.DL10	.DL12	.DL16	.DL20	.DL25	.DL32

Torque of Duo-Lock interface

	DL10	DL12	DL16	DL20	DL25	DL32
Nm	20	30	60	80	100	130

Attention: For longlife cycle of the system, compliance with the torque is required!

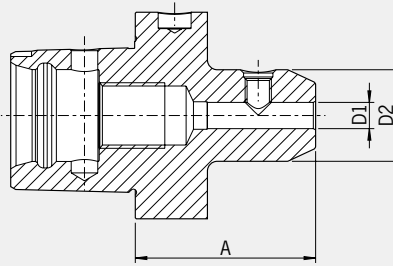
Accessories

Coolant tube



Order No. 85.700.CC6

WELDON TOOL HOLDER ISO 26623-1 · PSC 63



CERTIFICATE OF QUALITY

- ☑ Chuck fine balanced
G2.5 25,000 rpm or U < 1 gmm
- ☑ All functional surfaces fine machined
- ☑ More accurate than DIN


Use:

For clamping cutters with cylindrical shanks and Weldon flat according to DIN 1835-B and DIN 6935-HB. From Ø 6 to Ø 40 mm. Short version available.

- Interface with a unique tapered polygon and flange location face
- Exact positioning in the circumferential direction
- Highest runout accuracy, torque and rigidity
- Innovative modular tool system with highest precision
- Suitable for both turning and milling centres

ISO 26623

- Included in delivery: With clamping screw

Clamping	Ø D1 [mm]		06	08	10	12	14	16	18	20	25	32	40
	Ø D2 [mm]		25	28	35	42	44	48	50	52	64	72	80
Length A [mm]	short		55	55	60	60	60	65	65	65	80	90	100
Order No.	CC6.000...		.06	.08	.10	.12	.14	.16	.18	.20	.25	.32	.40

Accessories


Clamping screw

Clamping Ø			06	08	10	12	14	16	18	20	25	32	40
Order No.	85.100...		.06	.08	.10	.12	.12	.14	.14	.16	.18	.20	.25


Balancing index rings

Clamping Ø	long/oversize		06	08	10	12	14	16	18	20	25	32	40
Order No.	79.350...		.25	.28	.32	.42	.44	.48	.50	.52	.64	.72	.80

Cool Jet bores from Ø 6 mm – Ø 20 mm

Order No.	91.100.24	
-----------	-----------	---

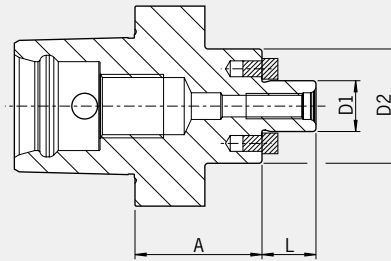
Cool Jet bores from Ø 25 mm – Ø 40 mm

Order No.	81.100.26	
-----------	-----------	---

FACE MILL ARBOR ISO 26623-1 · PSC 63

CERTIFICATE OF QUALITY

- ☑ Chuck fine balanced
G2.5 25,000 rpm or U < 1 gmm
- ☑ All functional surfaces fine machined
- ☑ More accurate than DIN



Use:

For clamping face mill cutters and cutters with radial driving slot DIN 1880.

- Interface with a unique tapered polygon and flange location face
- Exact positioning in the circumferential direction
- Highest runout accuracy, torque and rigidity
- Innovative modular tool system with highest precision
- Suitable for both turning and milling centres

ISO 26623

- Included in delivery: tightening bolt
- With coolant exit bores on the end face for milling cutters with central cooling

Clamping range	Ø D1 [mm]	16	22	27	32	40
	Ø D2 [mm]	36	48	60	63	70
	L [mm]	17	19	21	24	27
Length A [mm]	short	40	25	25	25	25
Order No.	CC6.050...	.16.KKB	.22.KKB	.27.KKB	.32.KKB	.40.KKB

Accessories

Tightening bolt

Size D1	16	22	27	32	40
Order No. 85.300...	.16	.22	.27	.32	.40

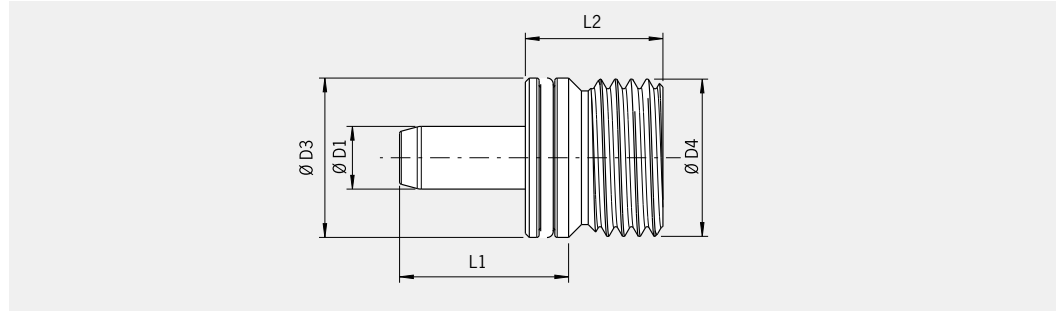
Wrench

Size D1	16	22	27	32	40
Order No. 84.400...	.16	.22	.27	.32	.40

Balancing index rings

Size	16	-	-	-	40
Order No. 79.350...	.36				.70

COOLANT TUBES ISO 22402-2 · PSC



- Coolant tube tightness up to 100 bar (1450 psi)
- Prevents spindle from being spoiled
- Must be used with all coolant through PSC spindles
- Special coating with extremely smooth surface
- No damaging of the sealing system
- Optional: Coolant tubes for minimum quantity lubrication (MQL) on request

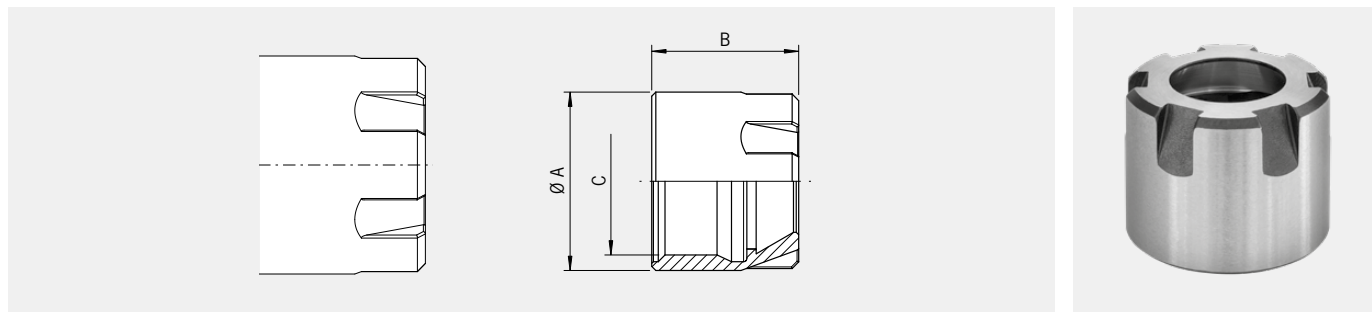
Coolant tube	PSC32	PSC40	PSC50	PSC63
Order No. 85.700...	.CC3	.CC4	.CC5	.CC6
D1 [mm]	5	6	7	8
D3 (mm)	12.3	14.3	16.3	20.3
D4 (mm)	M12×1.5	M14×1.5	M16×1.5	M20×2
L1 (mm)	16.1	17.2	18.2	21.5
L2 (mm)	11.5	14	15	17.5
Torque M (Nm)	10	10	10	20

Accessories

Wrench

Size D1	32	40	50	63
Order No. 84.500...	.CC3	.CC4	.CC5	.CC6

LOCKNUT FOR MINI-ER



Locknut for Mini-ER:

- Highest runout accuracy
- No wear and high clamping force due to special slide coating
- Small vibrations due to pre-balancing

Mini-ER	ER11	ER16
Order No. 915010-	0001	0002
Ø A	16	21.9
B	11.8	18
C	M13×0.75	M19×1

HAIMER®

Quality Wins.

TOOL HOLDER & CUTTING TOOL



TOOL MANAGEMENT
WINTOOL



SHRINKING TECHNOLOGY
HAIMER POWER CLAMP i4.0



TOOL ROOM
MANAGEMENT
OF THE FUTURE

TOOL DISPENSING SYSTEM
TOOLBASE



PRESETTING TECHNOLOGY
HAIMER MICROSET



BALANCING TECHNOLOGY
HAIMER TOOL DYNAMIC i4.0



Haimer USA, LLC | 134 E. Hill Street | Villa Park IL 60181 | USA

+1-630-833-1500 | haimer@haimer-usa.com | www.haimer.com